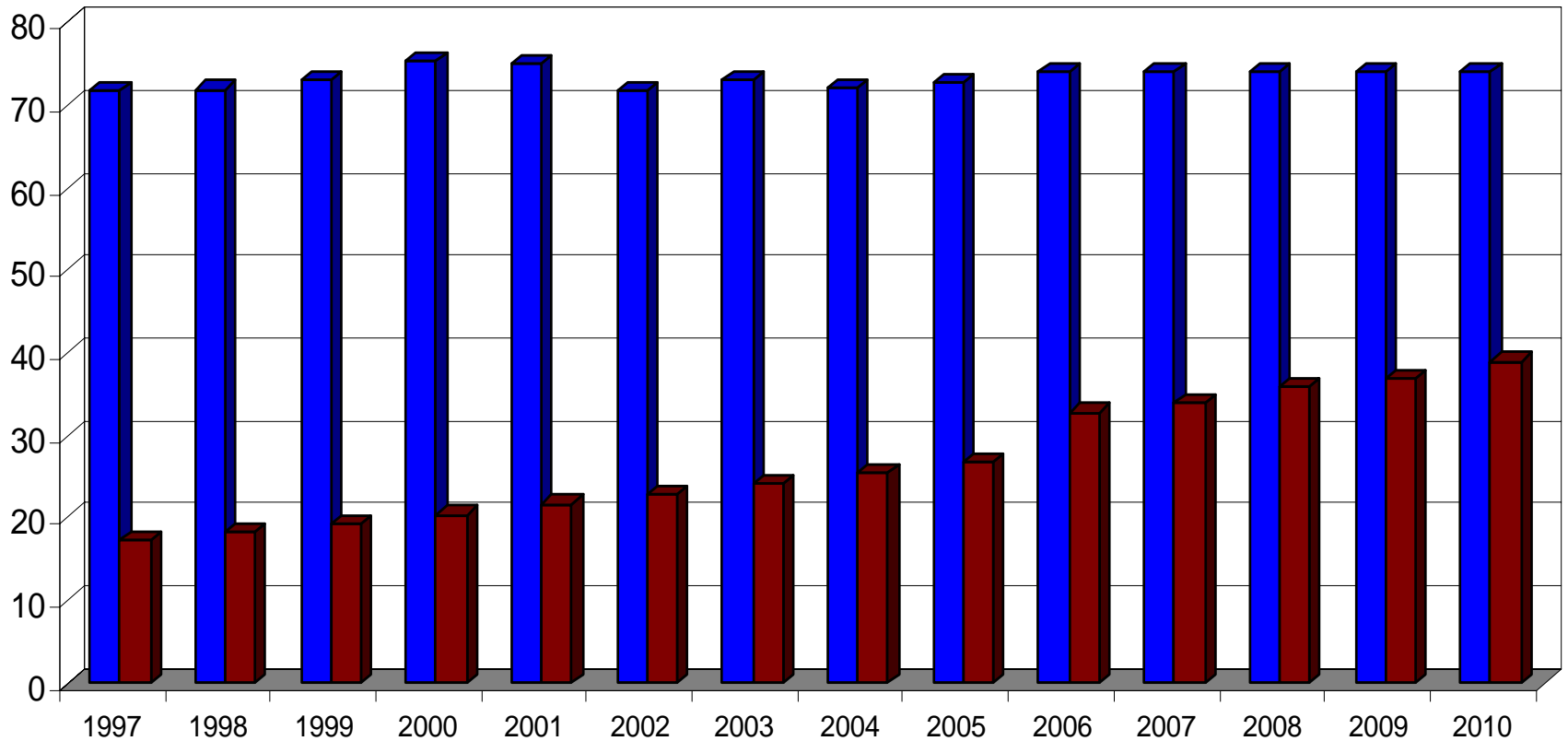


# ERS Active Members Stable – Retirees Increasing

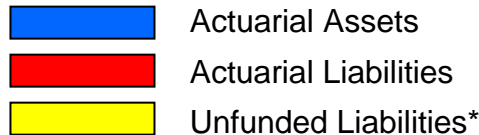
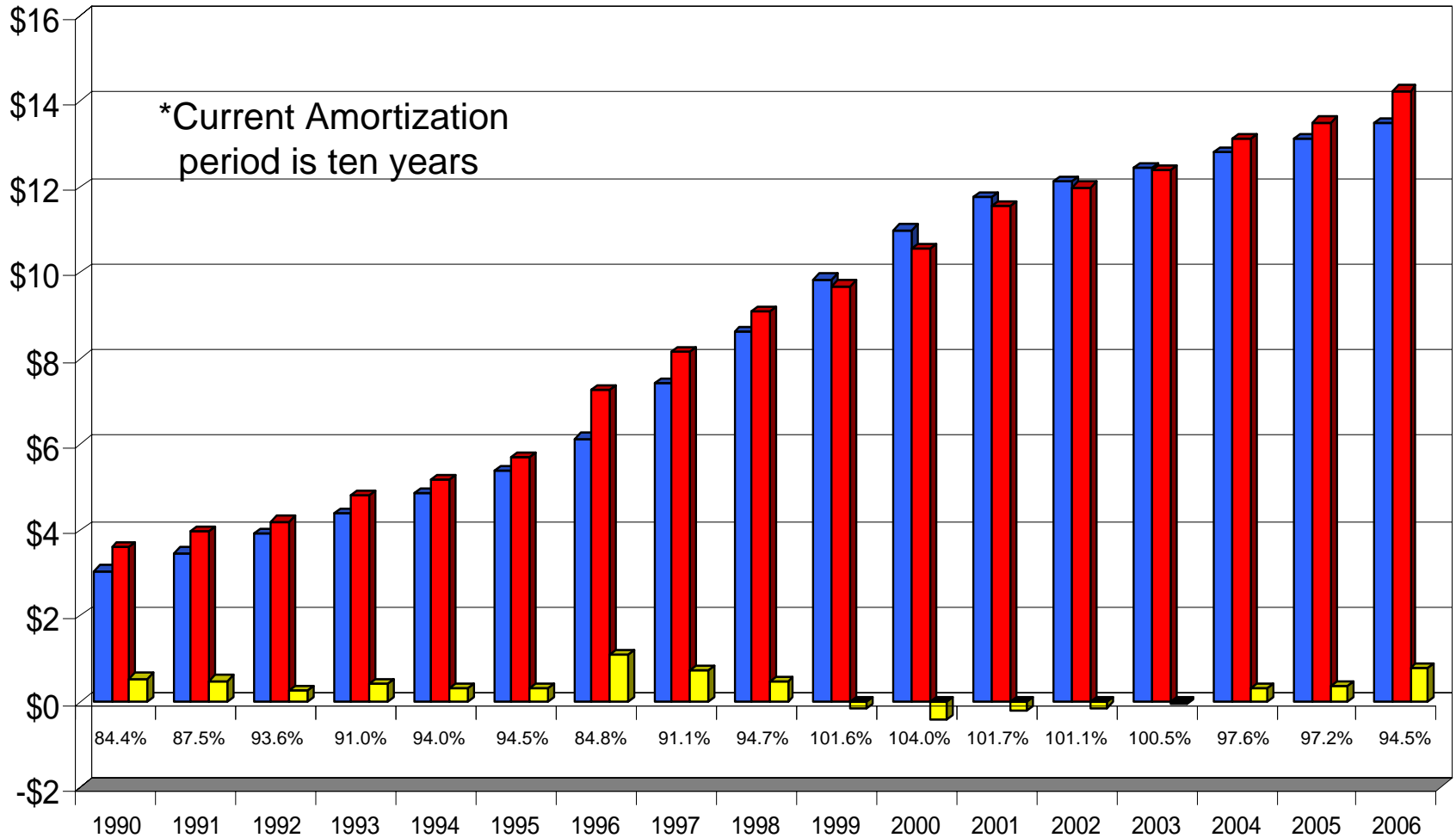
Thousands



■ Active Members ■ Retirees

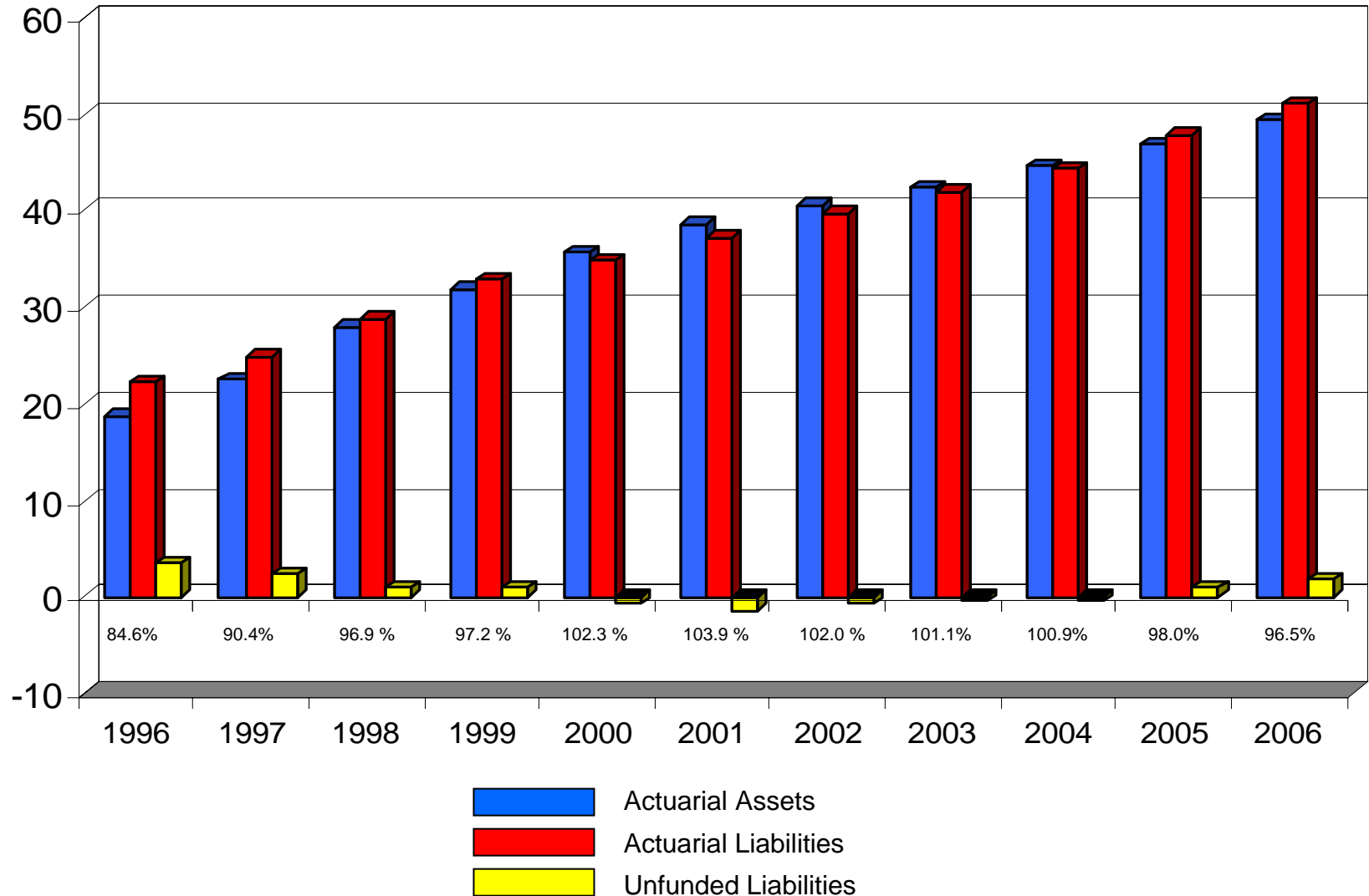
# ERS Funded Ratio Fluctuating Over the Years

Billions



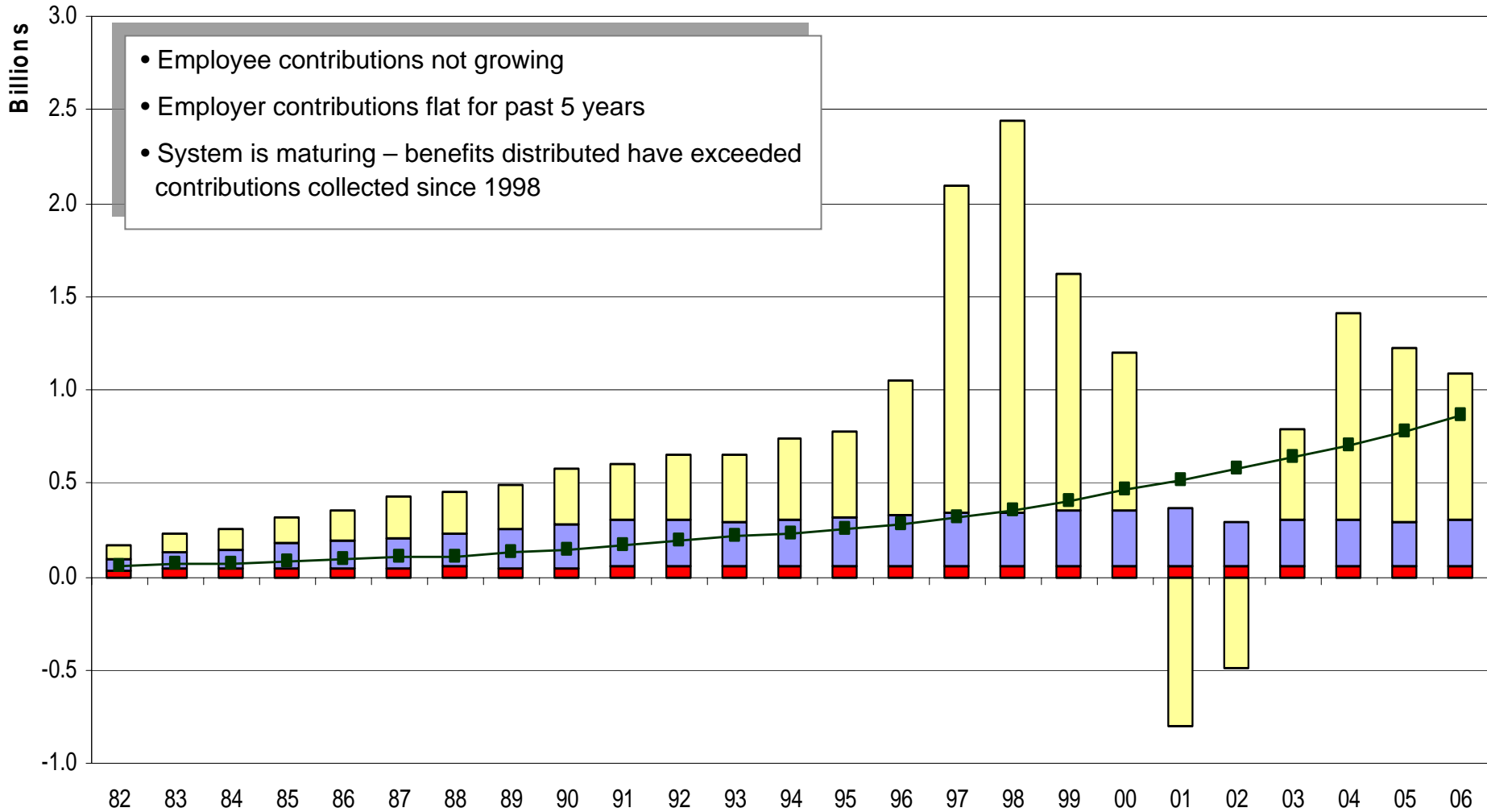
# TRS Funded Ratio Fluctuating Over the Years

Billions

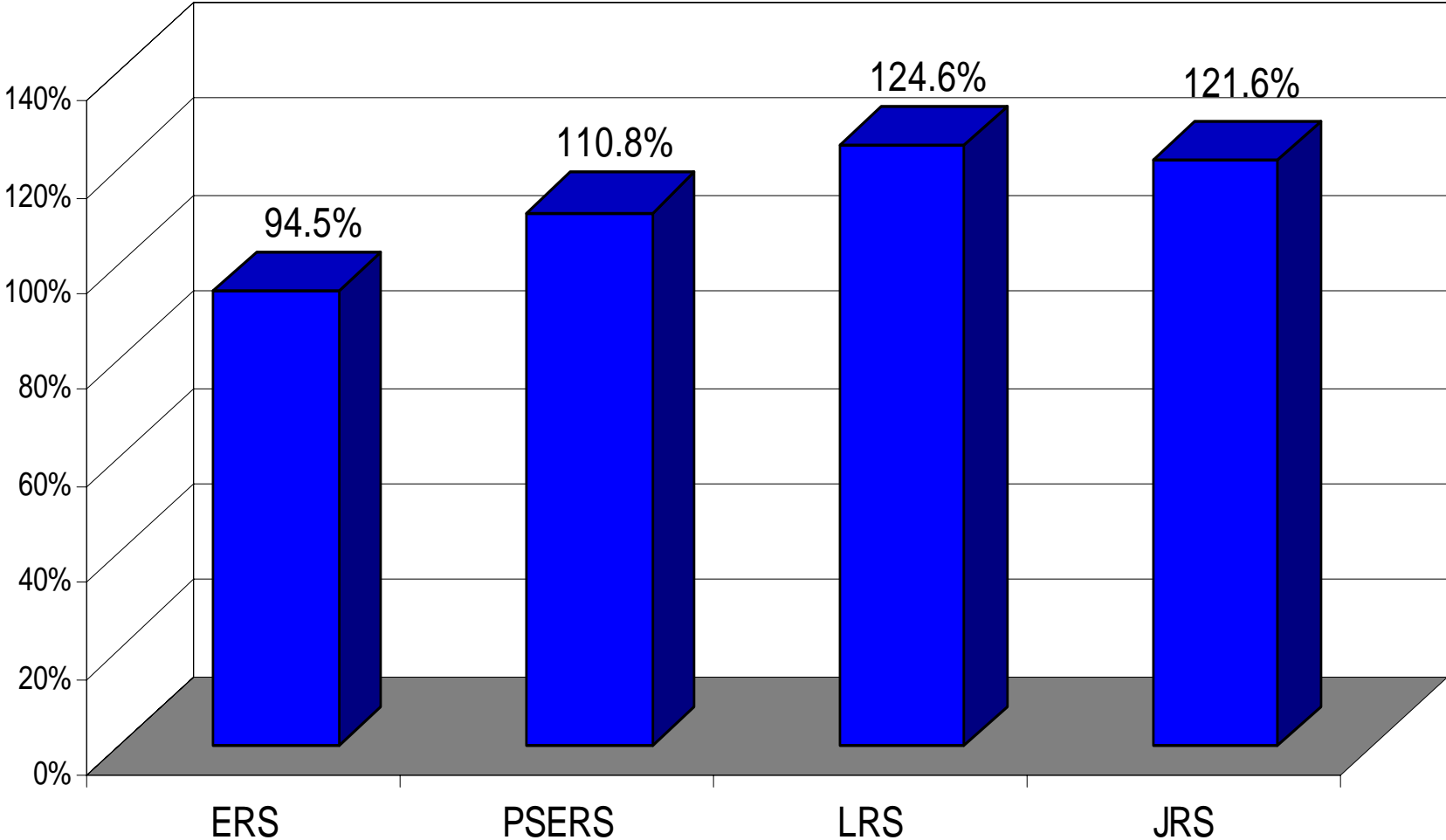


# ERS Historical Sources of Funds to Pay Benefits

- Employee Contributions
- Employer Contributions
- Investment Earnings
- Benefits Distributed

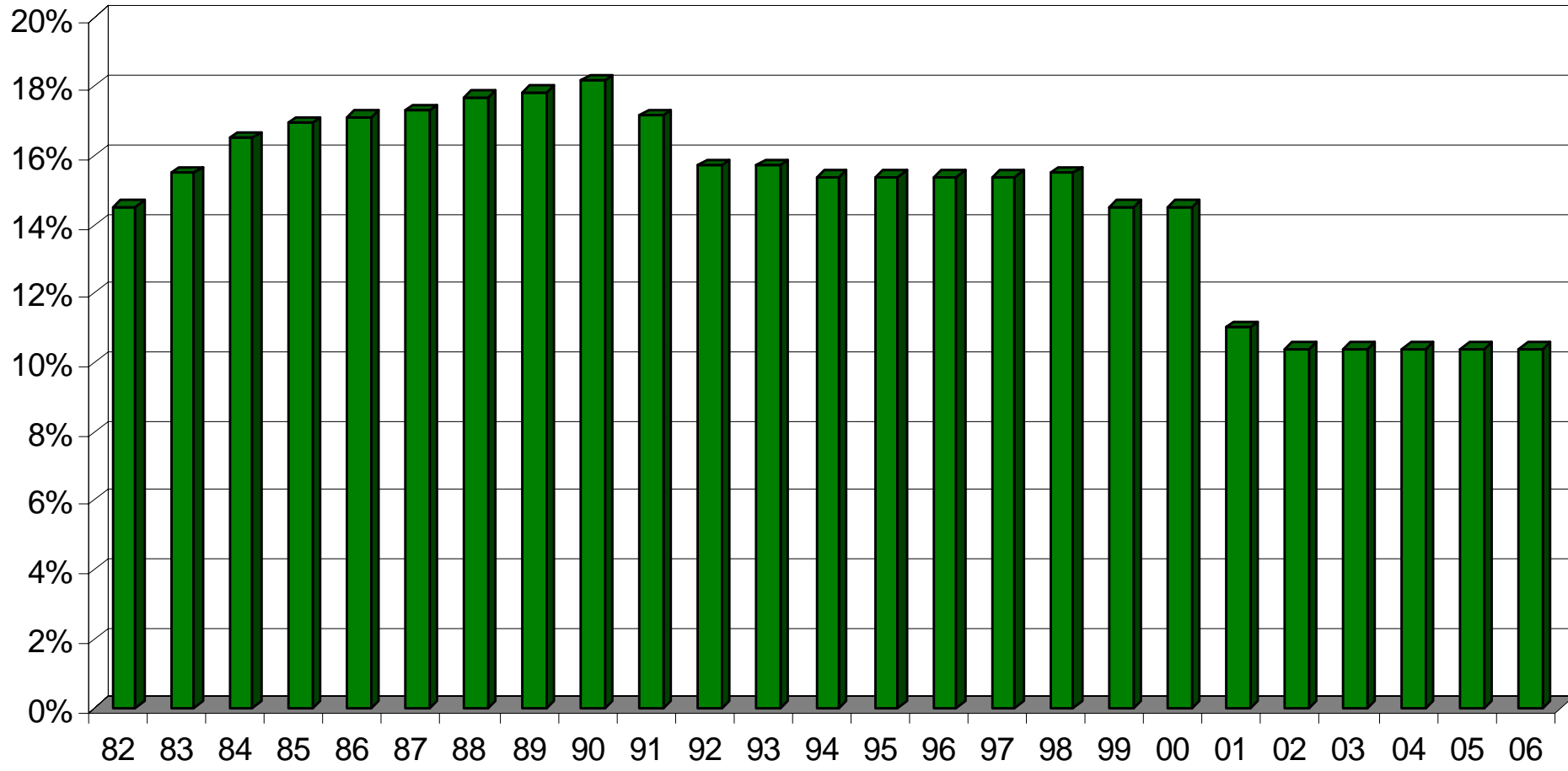


# Funding Status – 2006 Year – ERS Below Others



■ 2006

# ERS Historical Employer Retirement Contribution Rates – New Plan



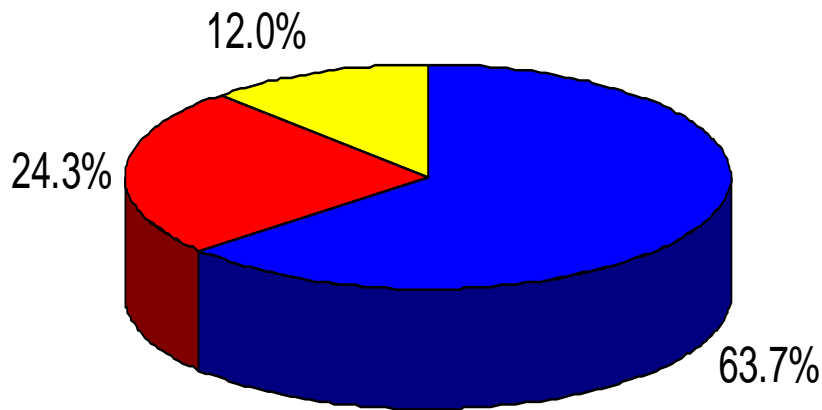
NOTE: The percentages represent the funded status of the system.

104.0%  
101.7%  
101.1%  
100.5%  
97.6%  
97.2%  
94.5%

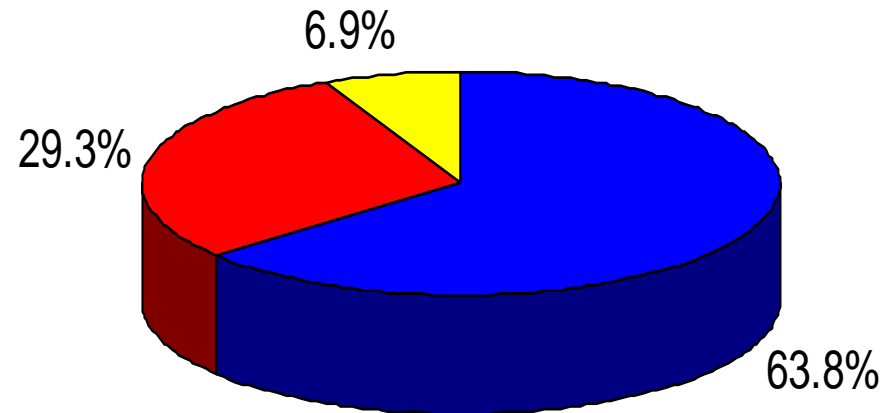
# Public Pension Fund Revenue Sources




## ERS Employee Contributions Lower % of Total

U.S. - 1982 to 2005



ERS - 1982 to 2005



-  Employer Contributions
-  Employee Contributions
-  Investment Earnings

# Contribution Rates – ERS Needs Change

